

Franklin High School Career Pathways

Exit 123

Agriculture

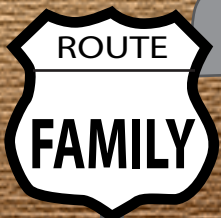
EXIT ONLY

Health &
Medical

What road will you choose?

BUSINESS

TRADE



2016



2017



Franklin

INDEPENDENT SCHOOL DISTRICT

7fYF DUK Uhg

.....5 FcUXhc Success

Welcome to an exciting time of your life! You are on a journey that leads not only to an education, but also to a bright and productive future. The Franklin Independent School District Career Pathways will inspire you to achieve the highest levels of preparation and educational excellence Franklin High School can offer. It is never too early to plan for reaching your goals. The time to begin considering and deciding what you would like to do with your future is now. The Career Pathways will lay a foundation for success in a variety of professional fields.

In addition to receiving a comprehensive educational experience, the Fisd Career Pathways will allow you to receive instruction tailored to your career and post-secondary aspirations. The course sequences offered will address areas of study specifically of interest to you. The knowledge and skills you learn will propel you into additional education and/or experiences important to your future career.

Please take the time to carefully examine the Career Pathways detailed in this brochure and feel free to ask questions and request more information that will allow us to assist you in achieving your goals for your time in Franklin ISD and beyond.



Principal
Franklin High School
Tim Luza
tluza@franklinisd.net

Principal
Franklin Middle School
Susan Nelson
snelson@franklinisd.net

Franklin ISD, in support of the state's college and career initiative known as *Achieve Texas*, has adopted seven Career Pathways based on the national career clusters. This initiative calls for parents to be actively involved in their children's education and career plan. Career Pathways are a way for schools to energize and motivate students to learn and achieve - with relevant and engaging curriculum through projects and authentic problem solving. Programs of Study (POS) have been designed for each Pathway. POS seamlessly integrate academic and elective classes to provide *suggested* course sequences based on individual needs, interests and career goals. All students, no matter what goals they have beyond high school, should be able to explore their interests in every FISD classroom through the lens of their Career Pathway. Refer to the course catalog for full course descriptions and POS options.

All 8th - 11th grade students meet with the counselor each year to assist them in identifying with a Career Pathway. This information provides a starting point for conversations between parents, students and Franklin faculty and staff when determining course selections each year. During yearly academic advisement, students may make changes to their Pathway focus based on changes in interests and/or career goals.

FISD Career Pathways

-  Business, Marketing & Finance Pathway
-  Consumer Science & Education Pathway
-  Fine Arts, Communications & Humanities Pathway
-  Health Sciences Pathway
-  Law, Government & Criminal Justice Pathway
-  Science, Technology, Engineering & Math Pathway
-  Veterinary & Agricultural Science Pathway



Helpful Links:

- Franklin ISD: www.franklinisd.net
- Achieve Texas: www.achievetexas.org
- Texas Education Agency: www.tea.state.tx.us
- Personal Graduation Plan: www4.esc13.net/ccr-support-center
- Career Clusters: www.texascaresonline.com
- Career Exploration: www.careercruising.com



Business, Marketing, & Finance Pathway



Middle School Supporting Courses:

- Core Academics
- Principles of Information Technology



High School Supporting Courses:

- Core Academics
- Accounting
- Audio/Video Production
- Career Preparation
- Digital & Interactive Media
- Economics
- Graphic Design & Illustration
- Web Technologies

Post-secondary Credit and Certifications:

- Blinn Dual Credit



Extended Learning:

- National Honor Society
- UIL Academic Team



Career Opportunities:

- Accountant
- Data Specialist
- Executive Assistant
- Office Manager
- Operations Manager
- Product Promotion
- Public Relations
- Software Engineer
- Teller
- Web Developer





Consumer Science & Education Pathway



Middle School Supporting Courses:

- Core Academics



High School Supporting Courses:

- Core Academics
- Career Prep
- Instructional Practices in Education & Training
- Child Development
- Fashion Design
- Food Science
- Lifetime Nutrition & Wellness



Post-secondary Credit and Certifications:

- Blinn Dual Credit



Extended Learning:

- Family, Career and Community Leaders of America (FCCLA)
- National Honor Society
- Texas Association of Future Educators (TAFE)

Career Opportunities:

- | | | |
|------------------|---------------------------|------------------------|
| • Architect | • Fitness Trainer | • Retail Sales |
| • Chef | • Human Resources Manager | • Set/Exhibit Designer |
| • Coach | • Industrial Designer | • School Administrator |
| • Counselor | • Merchandising | • Social Worker |
| • Daycare Worker | • Nutritionist | • Teacher |
| • Dietician | • Professional Athlete | • Therapist |



Fine Arts, Communications & Humanities Pathway



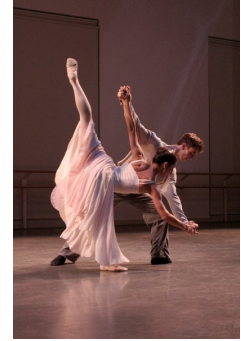
Middle School Supporting Courses:

- Core Academics
- Art
- Band
- Professional Communications
- Spanish I
- Theater



High School Supporting Courses:

- Core Academics
- Art
- Audio/Video Production
- Band
- Career Prep
- Colorguard
- Drill/Dance Team
- Graphic Design & Illustration
- Journalism/Photojournalism
- Music Methods
- Professional Communication
- Spanish
- Theater
- Yearbook



Post-secondary Credit and Certifications:

- Blinn Dual Credit



Extended Learning:

- National Honor Society
- Spanish Club National Honor Society
- Theater Club
- UIL Academic Team



Career Opportunities:

- Actor
- Artist
- Choreographer
- Corporate Trainer
- Designer

- Editor
- Film Director
- Graphic Designer
- Musician
- Photographer
- Producer
- Radio/TV Announcer
- Reporter
- Singer
- Video Production



Health Sciences Pathway

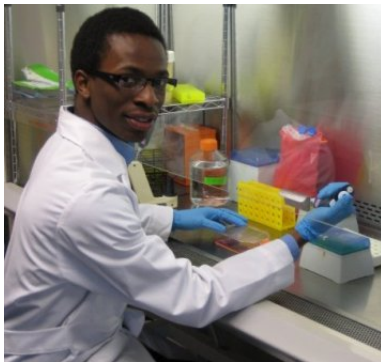


Middle School Supporting Courses:

- Core Academics
- Athletics
- Health

High School Supporting Courses:

- Core Academics
- Anatomy & Physiology
- Athletics
- Biology AP
- Career Preparation
- Chemistry AP
- Foundations of Personal Health
- Health Education



Post-secondary Credit and Certifications:

- Blinn Dual Credit
- CPR
- First Aid



Career Opportunities:

- | | |
|----------------------------|----------------------|
| • Biochemist | • Paramedic |
| • Dental Assistant | • Pediatrician |
| • Dentist | • Psychiatrist |
| • Dietician | • Radiologist |
| • EMT | • Speech Pathologist |
| • Lab Technician | • Surgeon |
| • Medical Transcriptionist | • Therapist |
| • Nurse (RN, LVN) | • X-ray Technician |

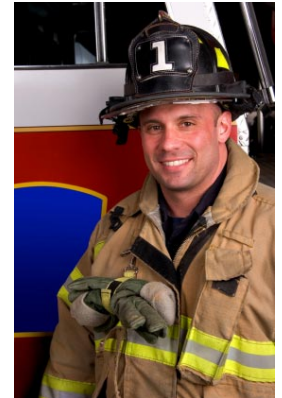


Law, Government, & Criminal Justice Pathway



High School Supporting Courses:

- Core Academics
- Career Preparation
- Government - Dual Credit
- Law Enforcement I / Criminal Justice
- Principles of Law, Public Safety, Corrections & Security



Post-secondary Credit:

- Blinn Dual Credit



Extended Learning:

- National Honor Society
- Student Council
- UIL Academic Team



Career Opportunities:

- Armed Services
- Criminal Investigator
- Dispatcher
- Firefighter
- Forensics
- Government Official
- Lawyer
- Legal Specialist
- Legislator
- Judge
- Paralegal
- Paramedic
- Police Officer
- Private Investigator



Science, Technology, Engineering & Math Pathways



Middle School Supporting Courses:

- Core Academics
- Technology



High School Supporting Courses:

- Core Academics
- Advanced Quantitative Reasoning
- Anatomy & Physiology
- Biology AP
- Calculus AP
- Career Preparation
- Chemistry AP
- Computer Science
- Physics AP
- Web Technologies



Post-secondary Credit:

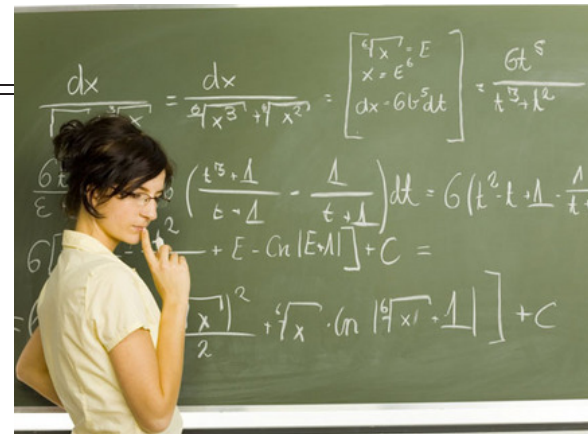
- Blinn Dual Credit

Extended Learning:

- National Honor Society
- UIL Academic Team

Career Opportunities:

- Aerospace Engineer
- Chemist
- Civil/Structural Engineer
- Draftsman
- Engineering Tech
- Inventor
- Lab Technician
- Meteorologist
- Physicist
- Statistician





Veterinary & Agricultural Science Pathway



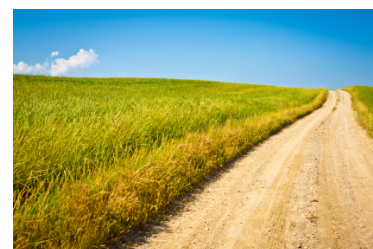
Middle School Supporting Courses:

- Core Academics



High School Supporting Courses:

- Core Academics
- Ag Mechanics & Metal Technology
- Aquatic Science
- Advanced Animal Science
- Career Preparation
- Environmental Systems
- Equine Science
- Horticulture Science
- Landscape Design & Turfgrass Management
- Livestock Production
- Practicum in Agriculture, Food, & Natural Resources
- Principles & Elements of Floral Design
- Principles in Agriculture, Food, & Natural Resources
- Small Animal Management
- Welding
- Wildlife Fisheries & Ecology Management



Post-secondary Credit and Certifications:

- Blinn Dual Credit
- CareerSafe
- Texas Hunter Safety



Extended Learning:

- The National FFA Organization

Career Opportunities:



- Botanist
- Electrician
- Farmer
- Florist
- Game Warden
- Horticulture Scientist
- Landscape Architect
- Marine Biologist
- Mechanic
- Rancher
- Turfgrass Specialist
- Vet Assistant/Technician
- Veterinarian
- Welder

: fUb_`]b`Independent School District

School Board Members

Dennis Varvel, President
Steve Schultz, Vice President
Scott Phillips, Secretary
Steve Jones
Kate Barnett
Bobby Box
Walter Commander

Superintendent

Bret Lowry

**Director of
Curriculum and Instruction**

Stacy Ely

Career Pathways

**Assistant Principal
Franklin High School**
Russell White
rwhite@franklinisd.net

**Counselor
Franklin High School**
Jeri Hughes
jhughes@franklinisd.net

**Counselor
Franklin Middle School**
Jeri Reagan
jreagan@franklinisd.net

